

Start text from email and chat announcement.

Good morning IMRC members,

A few weeks ago, some members expressed an interest in developing their Winlink skills as an IMRC activity.

The club's call sign, W4MOV, has a Winlink account associated with it, indeed the call sign and MOVE-1 and MOVE-2 tactical addresses, are installed on the trucks. We can use W4MOV as our virtual "EOC" and send messages to it.

Some of the Winlink message templates have location information which enables them to be mapped, either by the built-in tools or exported to a GIS app or Google maps. Since we have a geographically diverse membership, using one of these templates would let us display the messages and show where we are, kind of "Where is Waldo?"

The Winlink "Check In" message is one of these mappable templates and is simple to complete. There are others we might use that have more emergency management relevant information, but let's start with the basics.

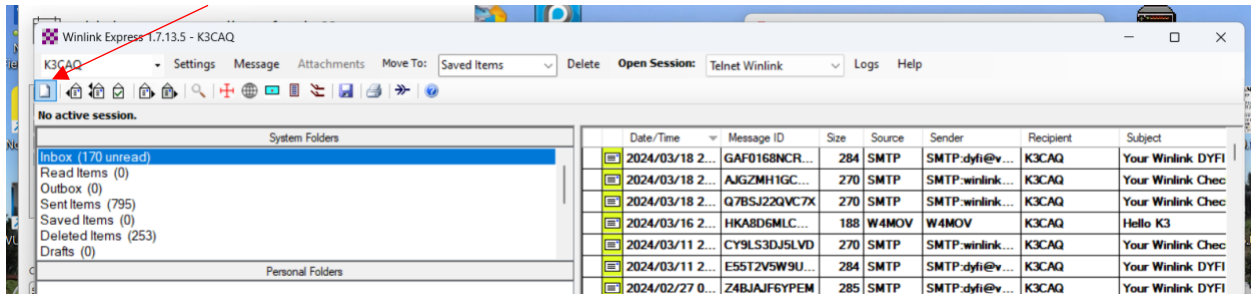
Members who are interested in participating in this activity, please send a Winlink Check In message to W4MOV before our monthly meeting (third Wednesday each month). You can send more than one message if you like. Messages will be displayed as part of our monthly meeting agenda starting in April 2024.

For those unfamiliar with the check in message details of how to find and complete it are in the attachment.

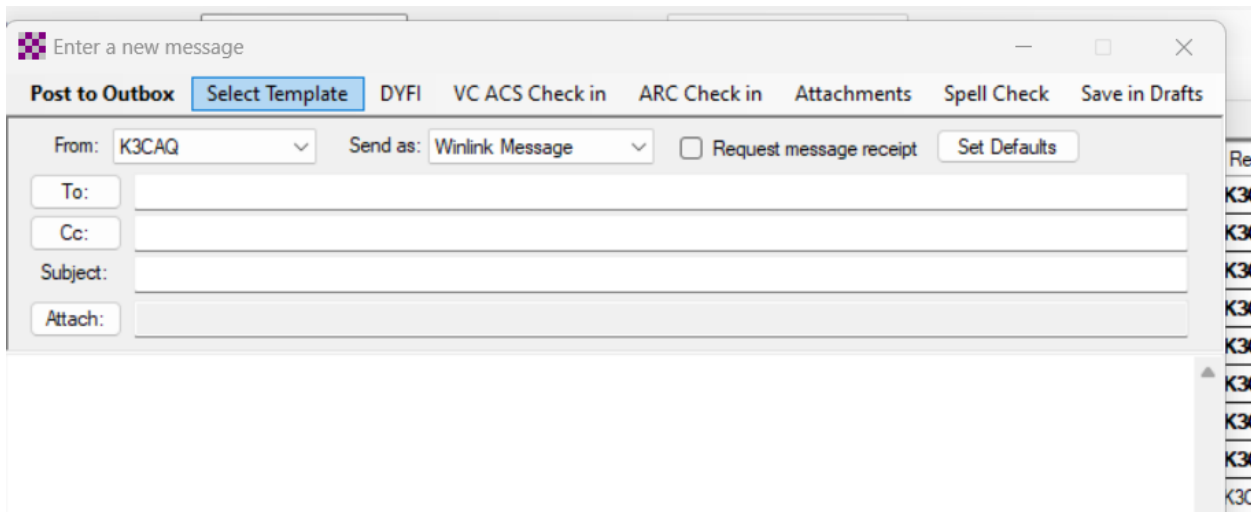
End text from email and chat announcement.

Finding the Winlink Check In Message from the Winlink Express “home” screen

Click on new message icon (leftmost in row)



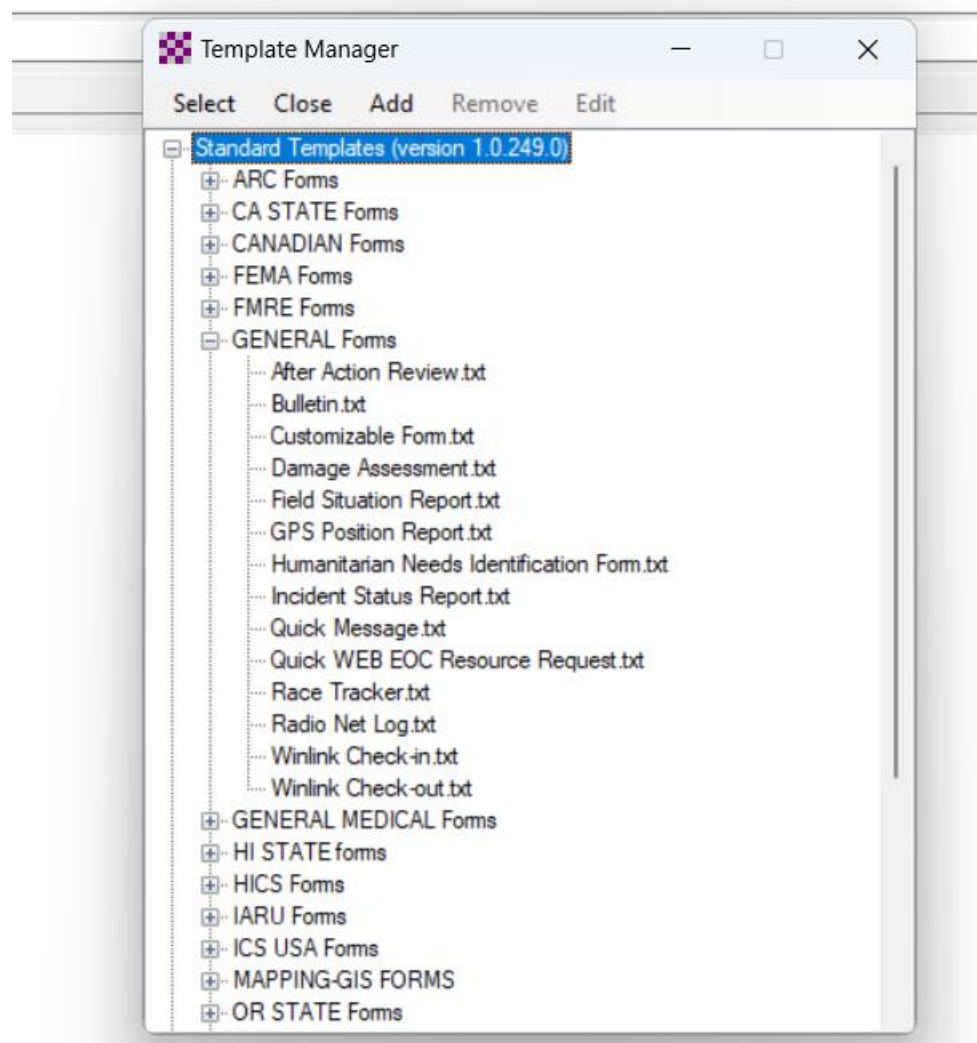
Click on select template



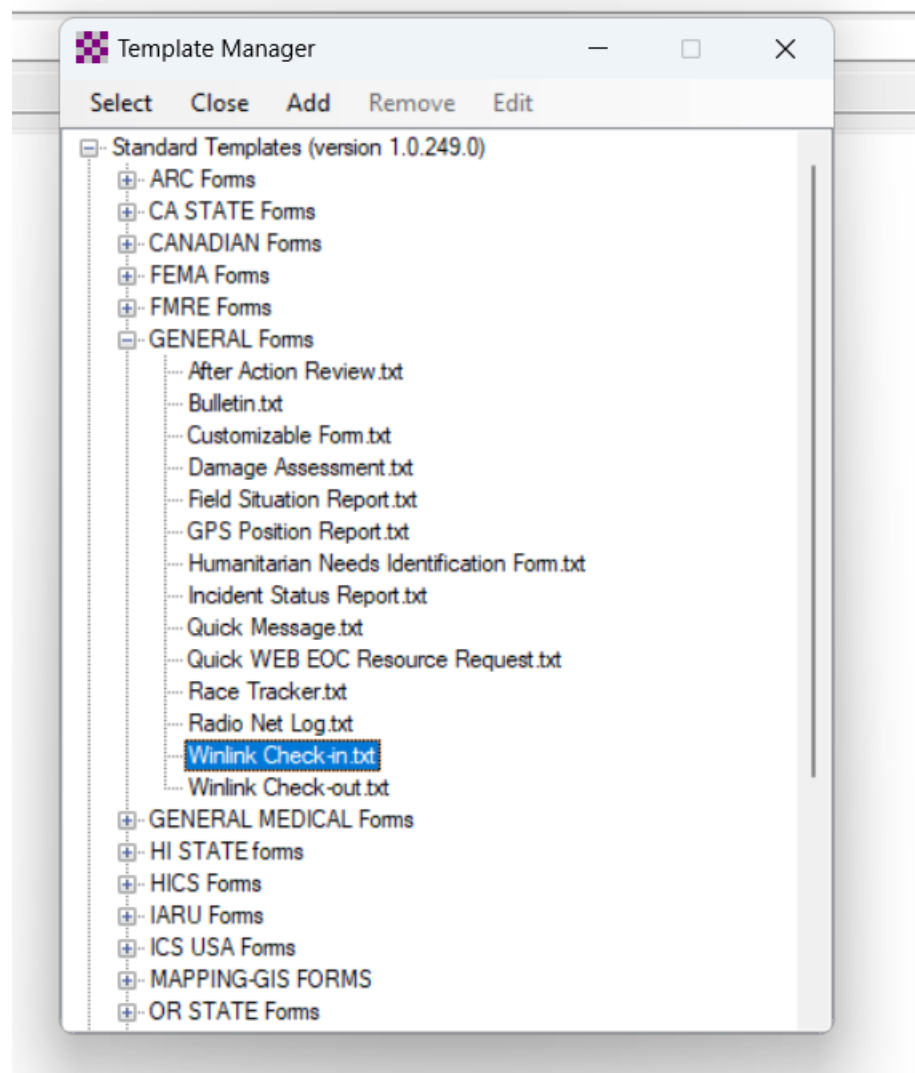
There are two ways to get the Check In template. The description here uses the “GENERAL Forms” path.

Expand Standard Templates

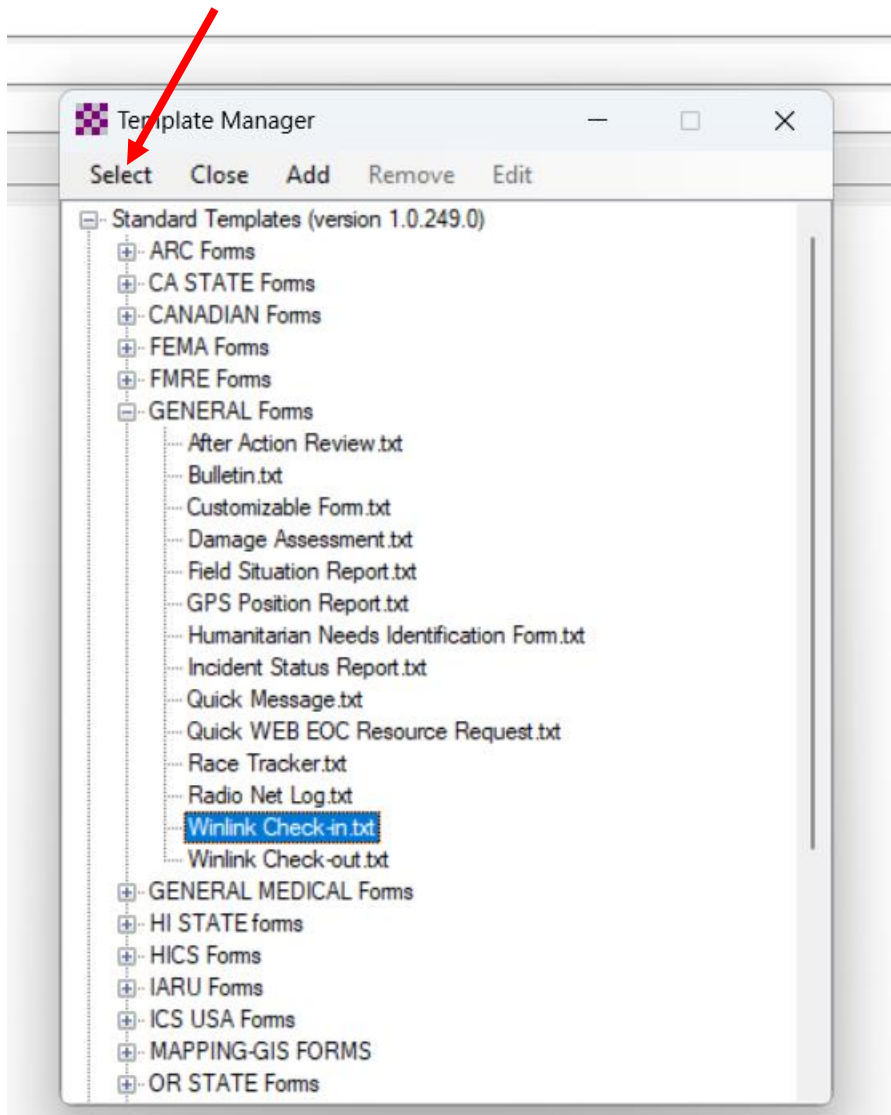
Expand GENERAL Forms



Select Winlink Check-in.txt



Then press select



The following tab will appear in your browser.

Winlink Check-in

[Setup](#) Click to add your agency/group name to title [Load Check-in Data](#)

Complete other entries as defined by your operating mode and location

1. STATION

a. **Date/Time:**

b. **To:** Enter W4MOV

c. **From:** Default Entry [Clear ALL "Send To" Entries.](#)

d. **Station Contact Name:** e. **Initial Operator(s):**

2. SESSION

a. **Type:** EXERCISE REAL EVENT b. **Service:** AMATEUR SHARES c. **Band:** NA Telnet HF VHF UHF SHF

d. **Session:** Telnet Packet Pactor Robust Packet Ardop VARA HF VARA FM Iridium Go Mesh

3. LOCATION

a. **Location:**

b. **LATITUDE:** c. **LONGITUDE:** d. **MGRS:** e. **GRID SQUARE:**

LAT/LON and MGRS default to the center of the grid square listed in Express Settings, unless a GPS is used or Lat/LON or MGRS must be entered manually. Without properly formatted GPS coordinates this form cannot be mapped in Winlink Express.

4. COMMENTS: Max Characters 500

Such as: On batteries. Need relief in 6 hours. A Brief SitRep. Operators Names. Special notes for next shift. Mode being used that was indicated as OTHER.

Ver 5.0.10

Please note: Winlink messages are publicly viewable. If you are concerned about your location being publicly known, enter false/inaccurate location data in the message.

A completed form appropriate to my mode and location

Winlink Check-in

[Setup](#) Click to add your agency/group name to title[Load Check-in Data](#)[Form Info](#)

1. STATION
a. Date/Time:
b. To: Clear ALL "Send To" Entries.
c. From: **d. Station Contact Name:** **e. Initial Operator(s):**

2. SESSION
a. Type: EXERCISE REAL EVENT **b. Service:** AMATEUR SHARES **c. Band:** NA Telnet HF VHF UHF SHF
d. Session: Telnet Packet Pactor Robust Packet Ardop VARA HF VARA FM Iridium Go Mesh

3. LOCATION
a. Location:
b. LATITUDE: **c. LONGITUDE:** **d. MGRS:** **e. GRID SQUARE:**
LAT/LON and MGRS default to the center of the grid square listed in Express Settings, unless a GPS is used or Lat/LON or MGRS must be entered manually. Without properly formatted GPS coordinates this form cannot be mapped in Winlink Express.

4. COMMENTS: Max Characters 500

Hello from the Midlands

Ver 5.0.10

Press submit, after one click and 2 "Oks" you get this:

Enter a new message

Post to Outbox Select Template DYFI VC ACS Check in ARC Check in Attachments Spell Check Save in Drafts

From: K3CAQ Send as: Winlink Message Request message receipt Set Defaults

To: W4MOV: Add your email address if you want a copy

Cc:

Subject: Winlink Check-in EXERCISE - K3CAQ - 44 Station Rd Codsall UK

Attach: RMS_Express_Form_Winlink_Check_In_Viewer.xml;FormData.bt

Winlink Check-in
0. HEADER
0a. Organization:
0b. Subject: Winlink Check-in EXERCISE - K3CAQ - 44 Station Rd Codsall UK

1. STATION
1a. Date/Time: 2024-03-23 14:05:26
1b. To: W4MOV
1c. From: K3CAQ
1d. Station Contact Name: Andy
1e. Initial Operators: K3CAQ

2. SESSION
2a. Type: EXERCISE
2b. Service: AMATEUR
2c. Band: NA
2d. Session: Telnet

3. LOCATION
3a. Location: 44 Station Rd Codsall UK
3b. Latitude: 52.63
3c. Longitude: -2.20
3d. MGRS: 30UWD5414531412
3e. Grid Square: IO82vp

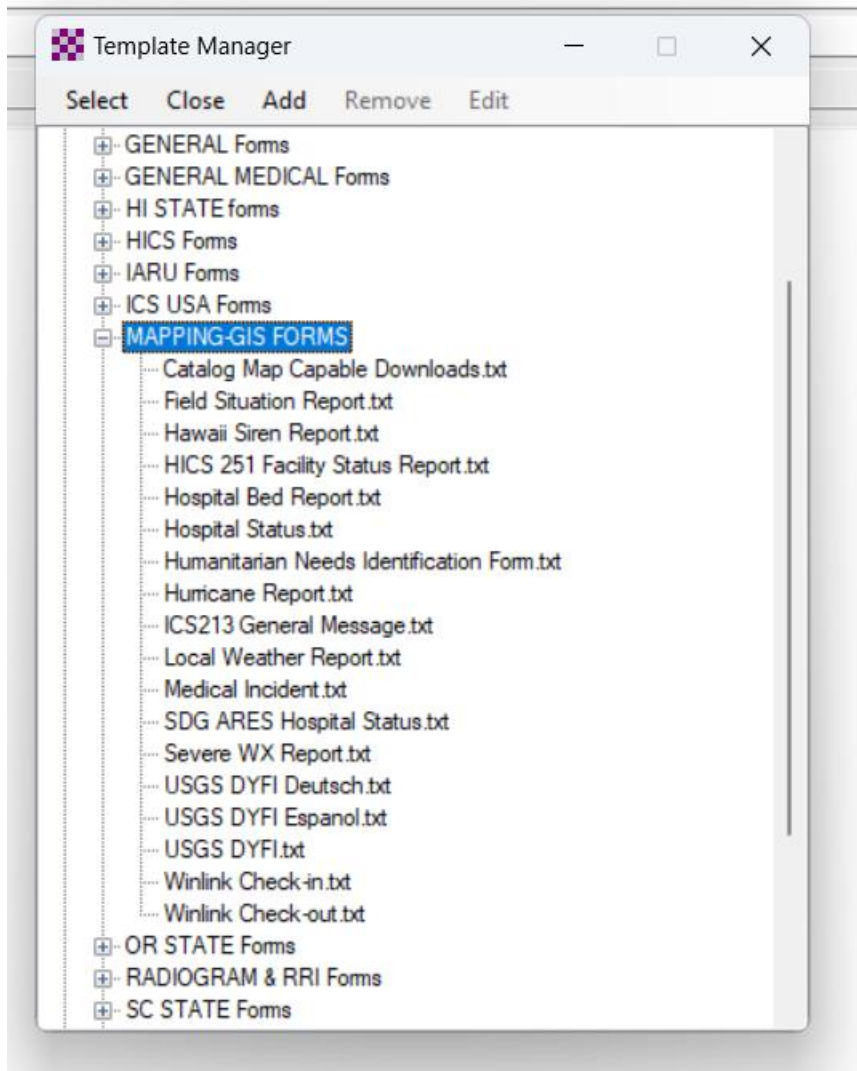
4a COMMENTS:

Hello from the Midlands

Winlink Check-in 5.0.10
Map file name: Winlink Check-in V5

Click on “Post to Outbox” and then open a session appropriate to your chosen mode and send the message.

The second path to the Check In Form is via the “MAPPING-GIS FORMS” group as shown below



Some test data

Displayed via the Winlink Map viewer using the W4MOV account.

Where is Waldo (Andy) see the blue balloons, W4MOV location is the green balloon (East Raleigh – my best guess)

